

# ANCHORIDGE



armstrong creek

**FRONT GARDEN DISPLAY GUIDE**



**Fleming's have a clear vision for the landscapes we design and build – to always create a real legacy that will stand the test of time. We are committed to designing landscapes that have an appropriate and valuable place in the lives of the people that use them, for generations to come.**

Where and how we live is a sincere reflection of who we are, which is why the landscaped environment of Anchoridge will provide its residents with a safe haven ensconced in nature's gifts.

This will be a fresh and innovative address, a thriving environment where life can be lived in full bloom. An oasis built around a huge parkland garden and a leafy streetscape where residents can build a secure and happy life enriched by their environment.

The landscape vision is persuaded by the soft environment first and foremost ensuring Anchoridge grows and develops into a place of green beauty, rich in canopy cover and plant life, while the built landscape extends on this to complement the soft scape with form and function.

Every consideration will be made to the purpose and value of the hardscape elements throughout this community, with park and play equipment designed for high use and diverse function.



## **EVERY lot at Anchoridge includes FREE Front Landscaping.\***

### **1. WHEN WILL MY GARDEN BE BUILT?**

Once Certificate of Occupancy is received on your new home. This can be emailed directly to [lotpackagesmelb@ldtotal.com.au](mailto:lotpackagesmelb@ldtotal.com.au). This email will then be directed to the landscaping Customer Service team who will respond as soon as possible.

### **2. HOW LONG WILL IT TAKE TO BUILD MY FRONT GARDEN?**

The build for each garden will take approximately two weeks. It is important to note that this schedule is a guideline only. There are many contributing factors which may impact on the time required to build the front garden.

### **3. CAN I CHOOSE MY PLANTS AND FEATURES?**

We are unable to accommodate individual selections of the plants and features. Whilst we will always have the selected front garden design in mind, the landscaper reserves the right to make alterations to plants and products within the design due to availability and seasonality restrictions. In the instance you wish to have plants excluded for any reason – we can do this as long as the request is lodged at the time of sending Certificate of Occupancy.

### **4. CAN I PLANT MY OWN PLANTS IN THE GARDEN?**

Once the landscaping is completed and handed over to you, it is yours. At Fleming's we believe gardens are an ongoing evolution, so it is great to add plants or other features, or even change the design slightly to suit your own preferences. This is entirely at your own discretion once the landscaping is completed.

### **5. CAN I ALTER THE GARDEN DESIGN?**

The landscaper is unable to accept changes, alterations or additions to the garden (with the exception of having a plant excluded). If you have any queries, please contact [lotpackagesmelb@ldtotal.com.au](mailto:lotpackagesmelb@ldtotal.com.au).

### **6. CAN I CHANGE OR ALTER THE GARDEN DESIGN AFTER IT IS BUILT?**

This is entirely at your own discretion once the landscaping is completed.

### **7. WILL MY GARDEN PACKAGE BE EXACTLY AS IT IS DRAWN IN THE PICTURE?**

Every home site and building envelope is unique and so each design will be adapted to best suit your block, orientation and housing façade.

### **8. CAN THE LANDSCAPER PROVIDE ADDITIONAL LANDSCAPING?**

If you wish to extend the scope of the landscape works, please contact us for more information. If we are able to assist, we will do so. This may become a separate job and contracted directly with you. Contact us at [lotpackagesmelb@ldtotal.com.au](mailto:lotpackagesmelb@ldtotal.com.au) for more information.

### **9. WHAT HAPPENS IF MY PLANTS DIE?**

The landscaper does not provide a warranty on the front yard landscapes. Any plant failure will not be subject to replacement and it is therefore the responsibility of the occupiers or owner of the property to ensure the health and ongoing maintenance of the garden once installed.

### **10. CAN THE LANDSCAPER MAINTAIN MY GARDEN?**

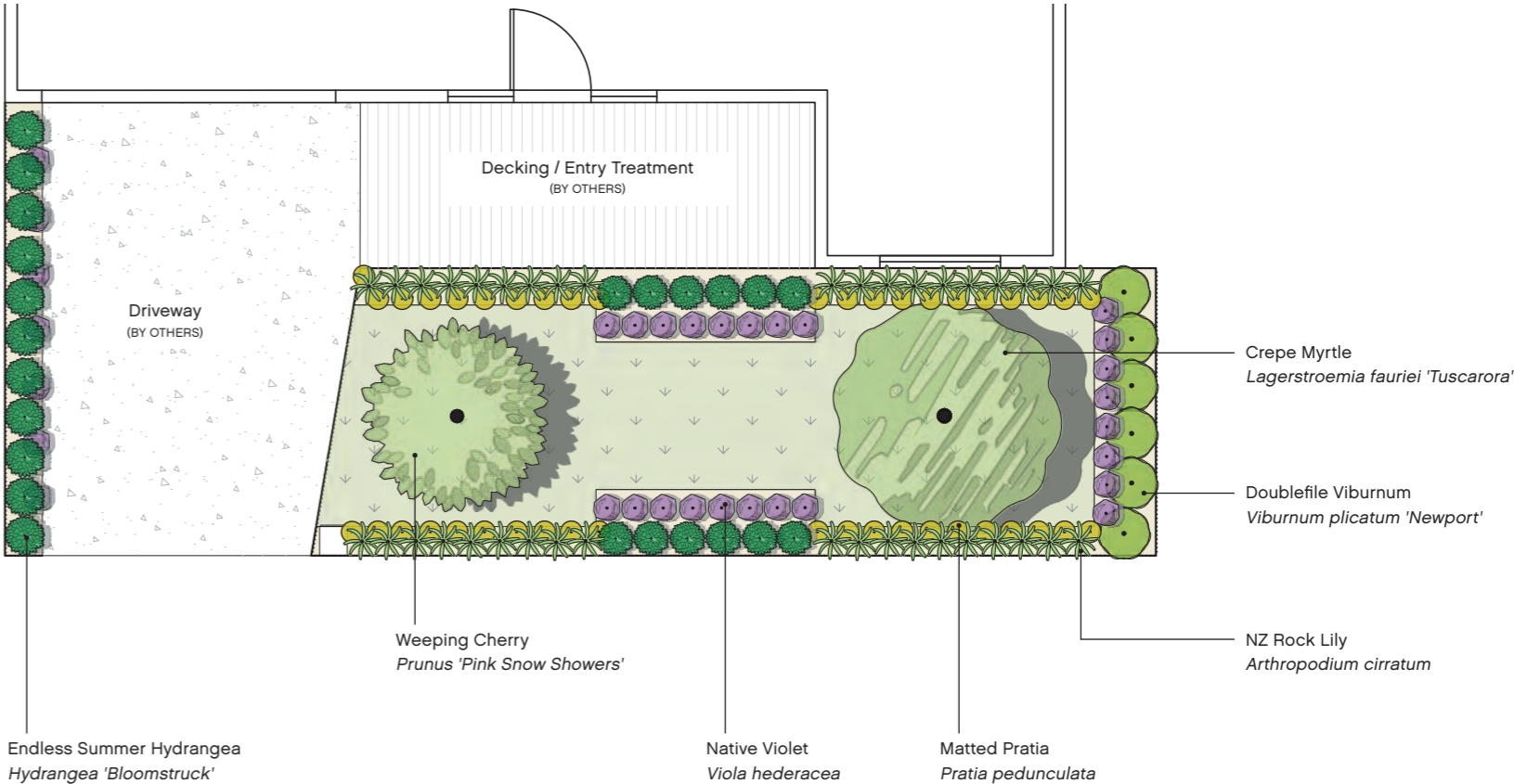
The landscaper cannot maintain your front landscaping. This is an occupier or owner responsibility.

\*THE DEVELOPER WILL PROVIDE FRONT LANDSCAPING TO ALL LAND LOTS, EXCLUDING MEDIUM DENSITY AND DISPLAY VILLAGE LOTS WITHIN ANCHORIDGE ESTATE.



# BLUSH GARDEN

Classical lines coupled with an elegant garden pallet make the Blush Garden the perfect selection for those that prefer a garden of symmetry and formality. This design has been styled to suit a wide range of potential home façades and allotment styles.



WEeping CHERRY



CREPE MYRTLE



HYDRANGEA 'BLOOMSTRUCK'



NZ ROCK LILY



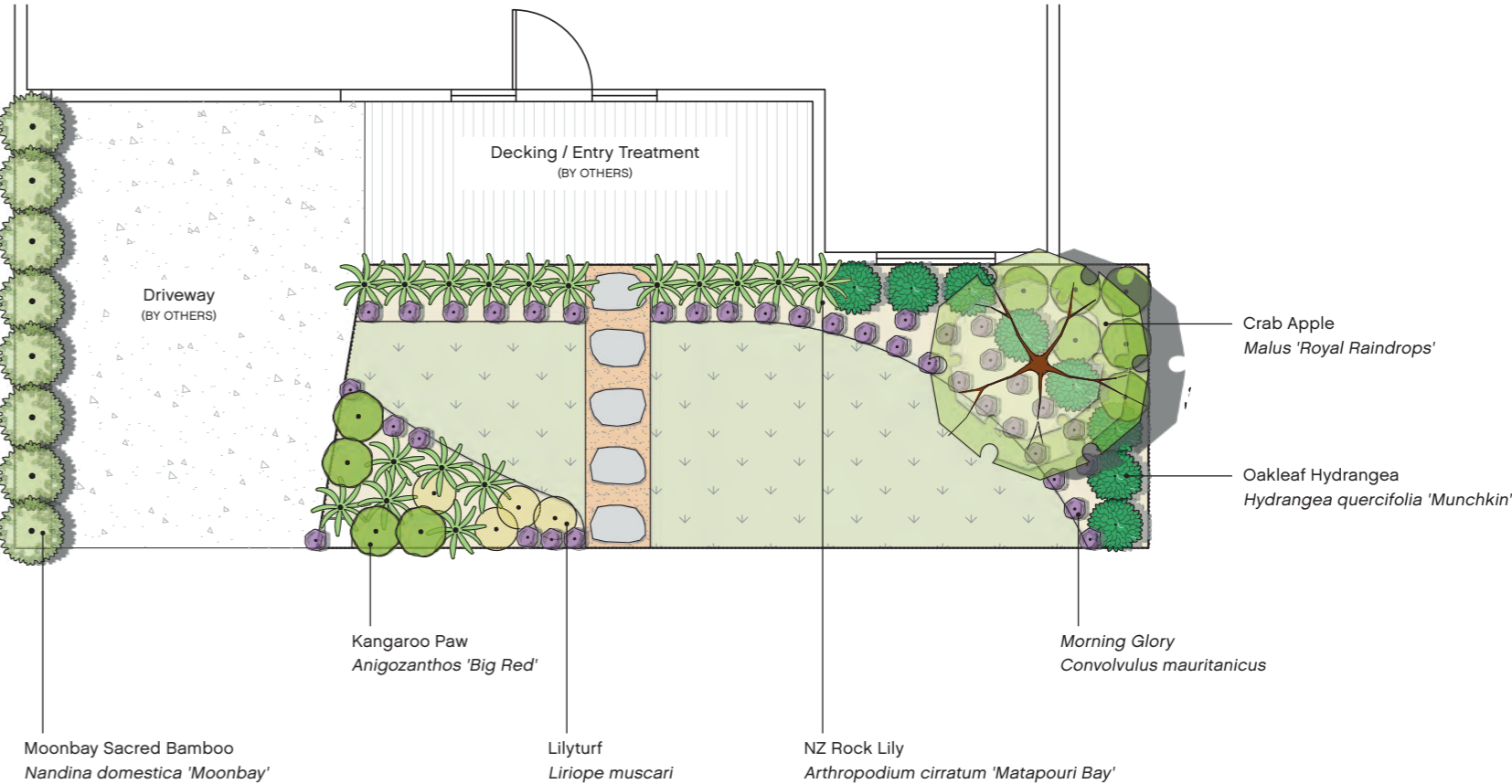
MATTED PRATIA





# SEA BREEZES GARDEN

The Sea Breezes Garden is a design for those seeking something a little different. Full of great garden selections, Sea Breezes will ooze with street appeal that will only grow more beautiful with time. Less formal lines and lots of movement ensures this design will be highly adaptable to any allotment and offers a selection of easy care plants keeping maintenance to a minimum.



CRAB APPLE



KANGAROO PAW



OAKLEAF HYDRANGEA



MOONBAY SACRED BAMBOO



MORNING GLORY



ALL PLANT MATERIAL DEPICTED ARE ARTIST IMPRESSION ONLY AND DEPICT PLANT SIZES AT THEIR MATURITY. PLANT SELECTIONS MAY VARY DUE TO AVAILABILITY AND SEASONAL IMPACTS. SUBSTITUTIONS WILL BE MADE WITH APPROPRIATE MATERIALS SIMILAR TO THOSE LISTED AND SHOWN IN MARKETING COLLATERAL.



HIMALAYAN BIRCH



ELDERBERRY



MOCK ORANGE



PURPLE FLAG

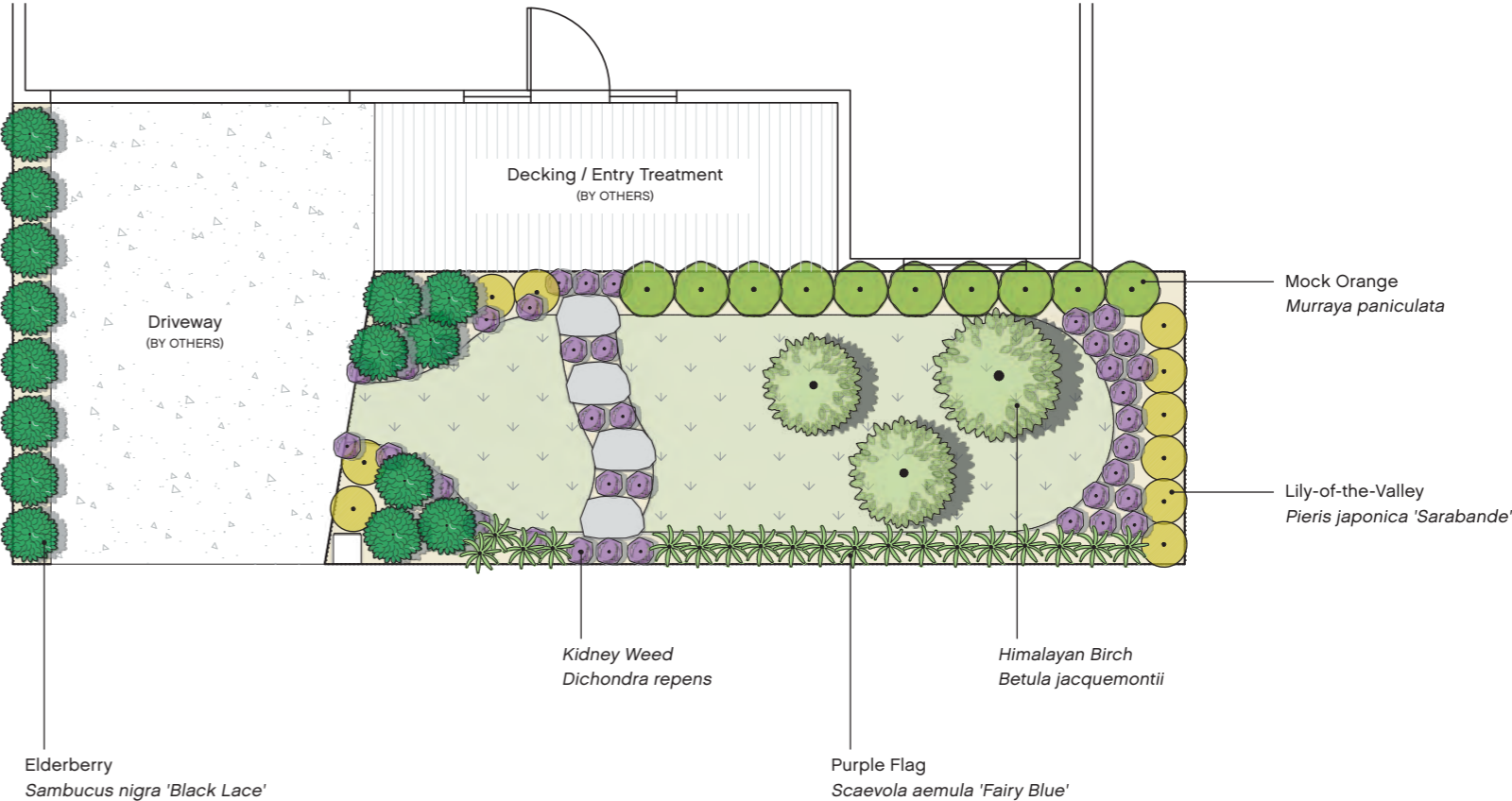


LILY-OF-THE-VALLEY



# SPRING GARDEN

The Spring Garden is a little less formal and offers curved lines and a very elegant pallet of plants with colour and life – just like a lively spring after a long cold winter. This garden will complement a large range of façades, from the very contemporary to more traditional styles, and will grow into a very graceful garden over time.





# MOONLIGHT GARDEN

Featuring a beautiful mix of plant styles and three feature trees set in a rectangular garden bed, the Moonlight Garden is highly adaptable to any allotment size. A modern yet highly functional design, the Moonlight Garden is ideal for those that love contemporary styling.

CREPE MYRTLE



OAKLEAF HYDRANGEA



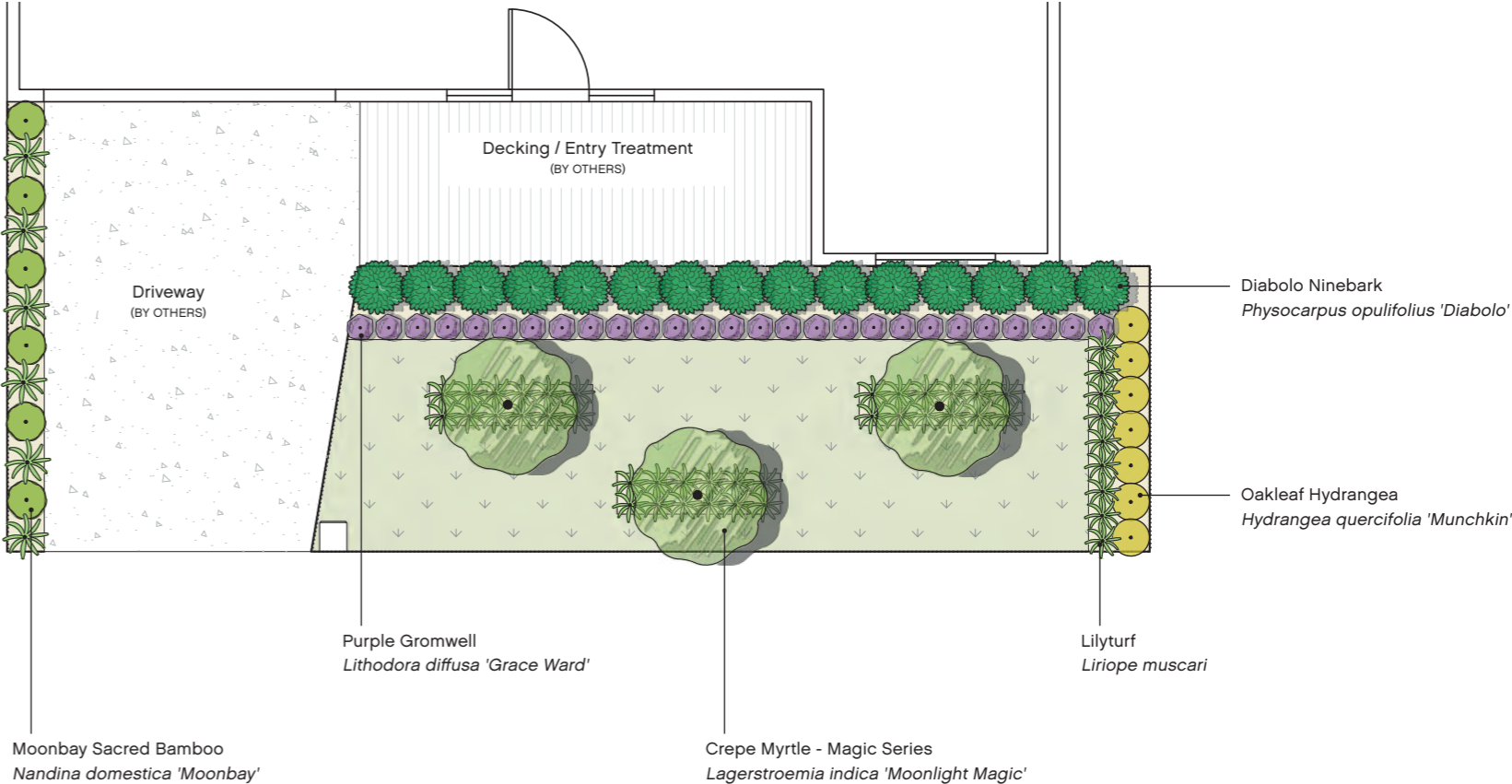
DIABOLO NINEBARK



LIRIOPE MUSCARI



PURPLE GROMWELL



Visit **ANCHORIDGE.COM.AU**

Visit our Land Sales Centre open 7 days 11am to 5pm. Phone 0427 308 543  
Cnr Barwon Heads Rd and Buchanan Blvd, Armstrong Creek 3217

THIS PUBLICATION IS FOR INFORMATION PURPOSES ONLY AND IS INTENDED TO BE GENERAL IN NATURE. ALL IMAGES, ILLUSTRATIONS AND RENDERS ARE FOR PRESENTATION PURPOSES, ARE NOT ACTUAL IMAGES OF THE DEVELOPMENT AND ARE INTENDED TO BE INDICATIVE ONLY. EVERY CARE IS TAKEN TO ENSURE INFORMATION CONTAINED IN THIS PUBLICATION IS ACCURATE AT THE DATE OF PRINTING, HOWEVER ANCHORIDGE CANNOT GUARANTEE ITS ACCURACY AFTER THAT TIME. PROSPECTIVE PURCHASERS SHOULD CAREFULLY REVIEW ANY CONTRACT OF SALE, ENDORSED PLANS, MAKE THEIR OWN ENQUIRIES AND OBTAIN INDEPENDENT ADVICE BEFORE PROCEEDING. THE LOT SIZES, LAYOUT AND MEANS OF ACCESS MAY CHANGE WITHOUT NOTICE. THE DEVELOPER AND RPM REAL ESTATE GROUP RESERVES THE RIGHT TO WITHDRAW OR ALTER ANY LOT OR STAGE LAYOUT AT ANY TIME AT ITS ABSOLUTE DISCRETION. NO WARRANTY OR REPRESENTATION HAS BEEN GIVEN OR IS TO BE CONSTRUED AS A RESULT OF THE PROVISION OF SUCH INFORMATION BY APD COAST. APD RETAINS THE RIGHT TO CHANGE SUCH LANDSCAPING AT ITS ABSOLUTE DISCRETION, INCLUDING THE RIGHT TO NOT PROVIDE SUCH LANDSCAPING AT ALL.

Proudly developed by:



Proudly marketed by:



Proudly landscaped by:

